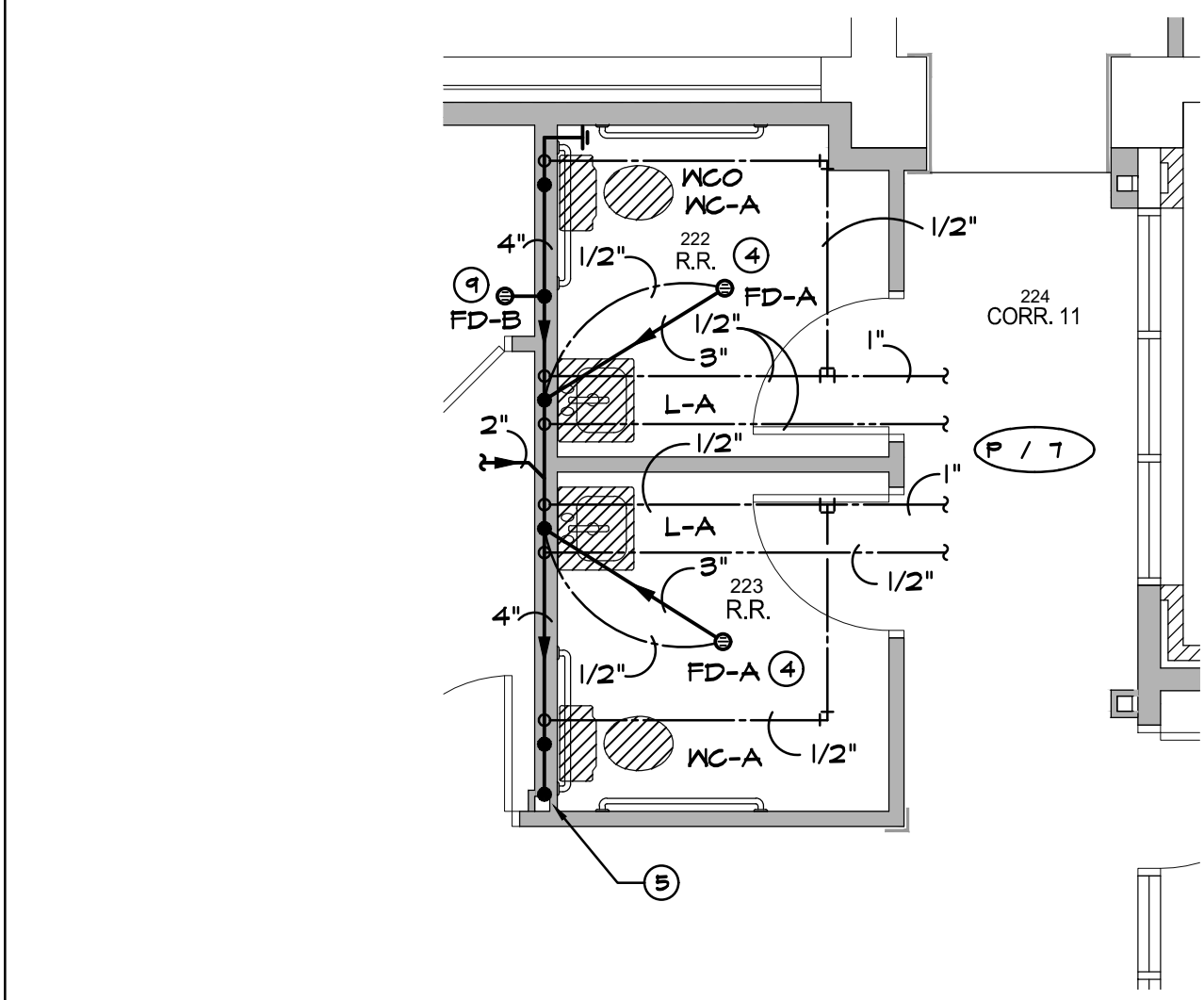


**F.8** ENLARGED SECOND FLOOR PLUMBING PLAN  
SCALE: 1/4" = 1'-0" (IF PRINTED IN 24" x 36" FORMAT)



**A.8** ENLARGED SECOND FLOOR PLUMBING PLAN  
SCALE: 1/4" = 1'-0" (IF PRINTED IN 24" x 36" FORMAT)

- PLUMBING GENERAL NOTES:**
- ALL WORK SHALL BE IN ACCORDANCE WITH APPLICABLE LOCAL, STATE, AND FEDERAL CODES (INCLUDING INTERNATIONAL PLUMBING CODE, INTERNATIONAL BUILDING CODE, NFPA, ETC.) AND APPLICABLE DEQ AND DWHOP REGULATIONS TO THE SATISFACTION OF THE AUTHORITIES HAVING JURISDICTION. CONTRACTOR SHALL OBTAIN REQUIRED PERMITS AND APPROPRIATE WORK AUTHORIZATION PRIOR TO BEGINNING WORK.
  - CONTRACTOR SHALL VERIFY EXACT LOCATION OF UTILITIES, INVERT ELEVATIONS, ETC. PRIOR TO BEGINNING ANY ROUGH-IN OF SUBSURFACE WORK. COORDINATE ALL UTILITY TIE-IN REQUIREMENTS WITH RESPECTIVE UTILITIES.
  - REFER TO ARCHITECTURAL DRAWINGS FOR ALL DIMENSIONS, DETAILS, ETC. INSTALL WORK TO CONFORM TO ARCHITECTURAL AND STRUCTURAL DRAWINGS AS REQUIRED. REVIEW COMPLETE SET OF CONTRACT DOCUMENTS PRIOR TO SUBMITTING BID.
  - CONTRACTOR SHALL RUN ALL NEW UTILITIES (WATER, SEWER, ETC.) AROUND NEW CONSTRUCTION AREA AS INDICATED PRIOR TO SHUTTING DOWN OR TIE-ING INTO ANY SYSTEMS. COORDINATE ALL UTILITY SERVICE DISRUPTIONS TO OTHER UTILITY CUSTOMERS WITH RESPECTIVE UTILITY. ALL UTILITY RELOCATION (SUCH AS WATER) SHALL BE DONE IN STRICT COMPLIANCE WITH UTILITY COMPANY STANDARDS AND REQUIREMENTS. CONTACT UTILITY COMPANY AND VERIFY AND DOCUMENT REQUIREMENTS, COST, CHARGES, ETC. CONTRACTOR SHALL FULLY COMPLY WITH ALL UTILITY COMPANY REQUIREMENTS.
  - COORDINATE ALL WORK THROUGH GENERAL CONTRACTOR. COORDINATE CUTTING, PATCHING, TRENCHING WORK WITH SITE GRADING/PAVING PLAN.
  - UNDERSGROUND UTILITIES ARE APPROXIMATE. VERIFY INVERTS AND EXACT LOCATIONS WITH UTILITY PERSONNEL. VERIFY ALL EASEMENTS WITH APPROPRIATE PARTIES. ADJUST ALL UTILITY LINES ACCORDINGLY.
  - ALL DOMESTIC WATER BRANCH LINES SHALL HAVE VALVES AT MAINLINES.
  - THE EXISTING BUILDING WILL BE OCCUPIED DURING CONSTRUCTION DURING NORMAL BUSINESS HOURS, WHICH ARE 7:30 AM TO 5:00 PM ON MONDAY THRU THURSDAY AND 7:30 AM TO NOON ON FRIDAY. ADDITIONALLY, THERE ARE REGULARLY SCHEDULED MEETINGS IN THE EVENINGS.

- PLUMBING KEYNOTES:**
- EXISTING WATER CLOSET TO REMAIN. CLEAN FIXTURE AND VERIFY PROPER CONNECTIONS, WATER FLOW, OPERATION, ETC.
  - EXISTING LAVATORY TO REMAIN. CLEAN FIXTURE AND VERIFY PROPER CONNECTIONS, WATER FLOW, OPERATION, ETC.
  - PROVIDE A BALL TYPE CUTOFF VALVE ABOVE ACCESSIBLE CEILINGS.
  - TAP OFF LAVATORY P-TRAP WITH 1/2" CHROME LINE TO WALL AND CONTINUE IN WALL WITH 1/2" SOFT COPPER LINE TO BELOW GRADE TO TRAP PRIMER CONNECTION ON FLOOR DRAIN. ALL EXPOSED SUPPLY LINE SHALL BE CHROME (1/4" TRAP PRIMER TAILPIECE).
  - 4" SANITARY SEWER DOWN TO BELOW. REFER TO FIRST FLOOR PLUMBING PLAN FOR CONTINUATION.
  - 3" SANITARY SEWER DOWN TO BELOW. REFER TO FIRST FLOOR PLUMBING PLAN FOR CONTINUATION. ACCESS PANEL FOR HUB DRAIN SHALL BE FIRE RATED.
  - 1/2" DOMESTIC COLD WATER LINE UP FROM BELOW. REFER TO FIRST FLOOR PLUMBING PLAN FOR CONTINUATION.
  - PROVIDE AND INSTALL WATER HEATER IN DRAIN PAN ON FLOOR IN THIS VICINITY. PIPE 1/2" RELIEF LINE AND EMERGENCY DRAIN LINE FULL SIZE AND TERMINATE IN FLOOR DRAIN WITH AIR GAP.
  - PROVIDE AND INSTALL PROSET TRAP GUARD IN FLOOR DRAIN IN THIS VICINITY.
  - STORM DRAIN LINE DOWN IN WALL TO FIRST FLOOR.
  - REFER TO FIRST FLOOR PLUMBING PLAN FOR CONTINUATION OF EMERGENCY STORM DRAIN LINE BELOW.

**ADG ENGINEERING** ASSOCIATED DESIGN GROUP, INC.  
3909 W Congress Street, Suite 201  
Lafayette, Louisiana 70506  
Phone: (337) 234-5710  
Email: adginc@adginc.org  
Project No. 25097

4	ADDENDUM NO. 4	05.14.2026
NO.	REVISIONS/SUBMISSIONS	DATE

**Lynn Guidry** ARCHITECT  
411 ARGENEAUX ROAD CARENCRO LOUISIANA 70520  
337.846.6645 email:lynn@lynnguidryarchitect.com

**CARENCRO CITY HALL EXPANSION 2026**

210 EAST ST. PETER STREET CARENCRO, LOUISIANA

**CITY OF CARENCRO**

Drawing Title <b>PLUMBING PLANS</b>		
	Designed <b>DEP</b>	Project No. <b>2024.006</b>
	Drawn <b>RW</b>	Scale <b>AS NOTED</b>
	Checked <b>RCC</b>	Drawing No. <b>P.110R1</b>
	Revised <b>RCC</b>	67 of 83
Date <b>FEB. 10, 2026</b>		